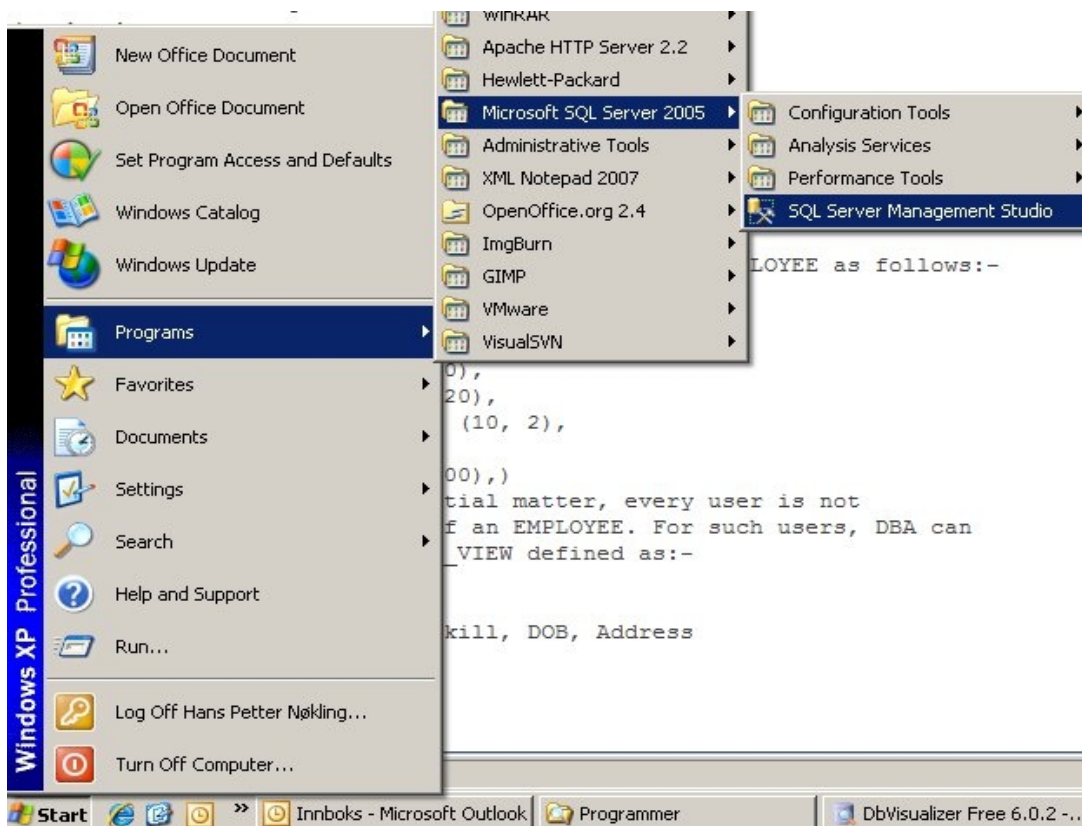
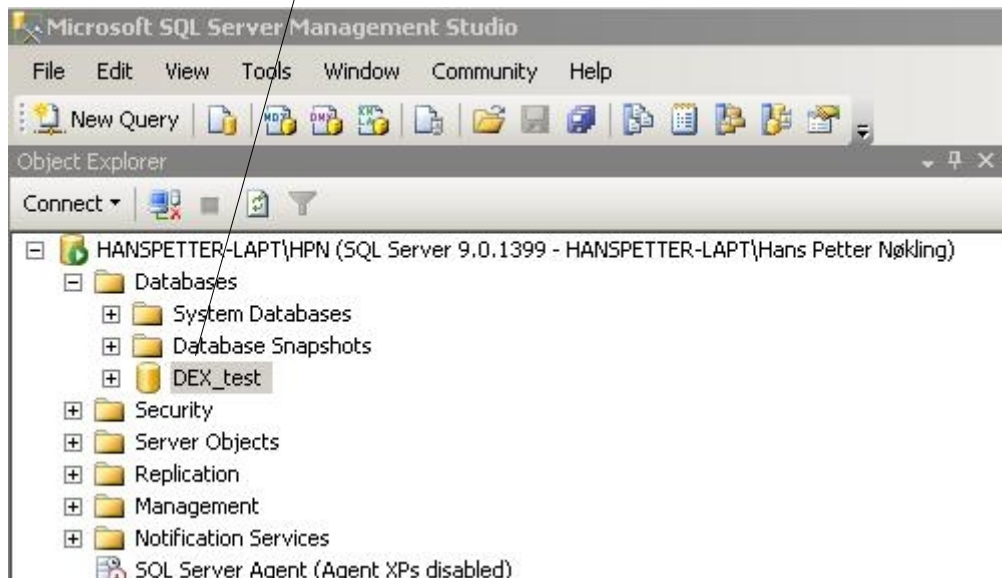


“HowTo” create a View on MS SQLServer DB

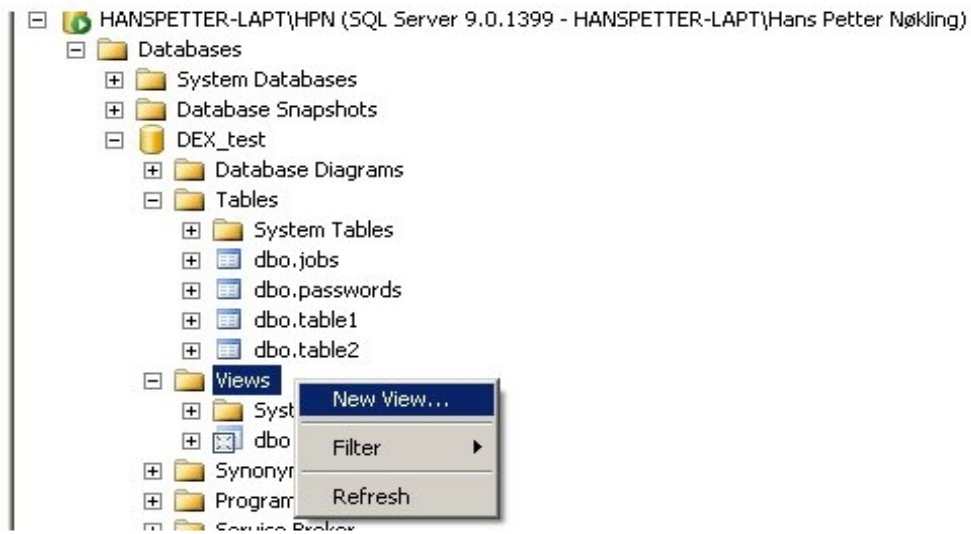
1. Start SQL Server Management Studio (or suitable equivalent):



2. Connect to desired DataBase:

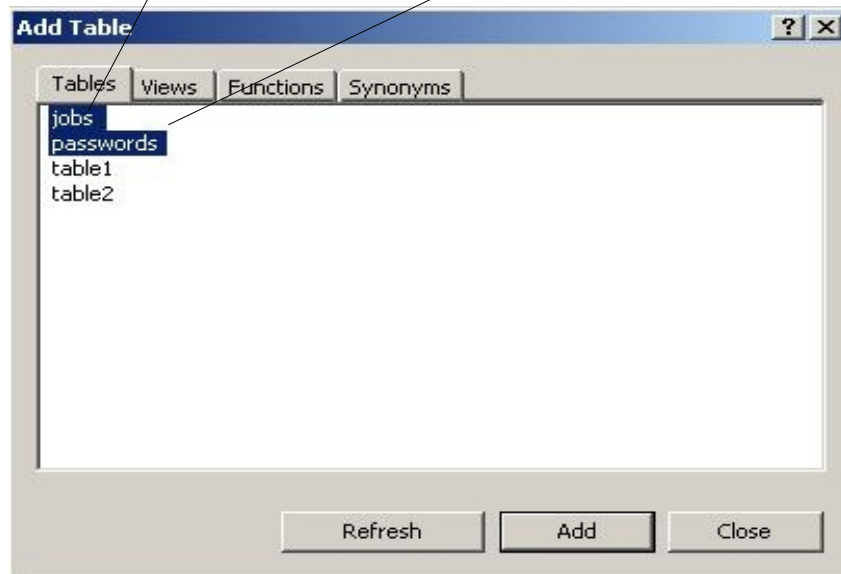


3. Create a new view:



4. Choose tables for the view:

In this example the table **jobs** contain document-data, and **passwords** contain the corresponding password for the document.



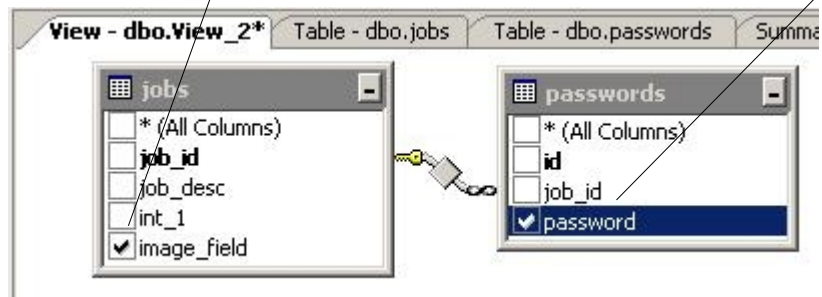
Choose desired tables and click **Add**.

In the background window you'll now see these tables with their columns.

Click **Close** to close the "Add Table"-wizard.

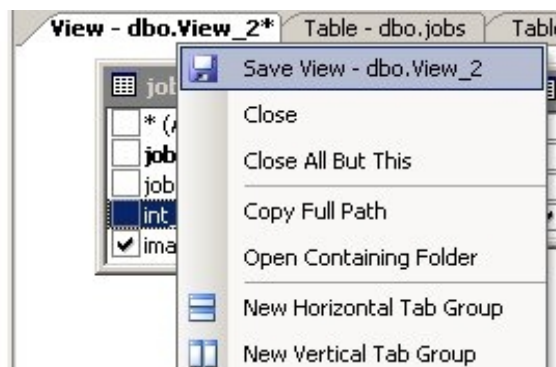
5. Choose desired columns:

In this example the column **image_field** in the jobs-table contain the document-data, and **password** in the passwords-table contain the corresponding password.

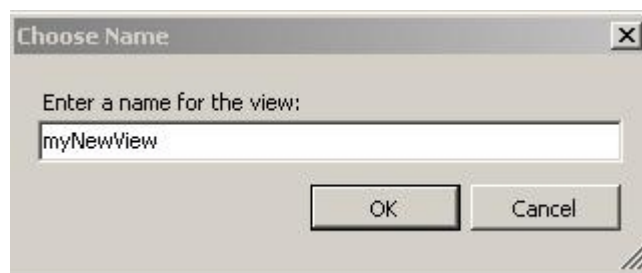


6. Save the view:

Right-click the “view-tab” and click **Save View**.

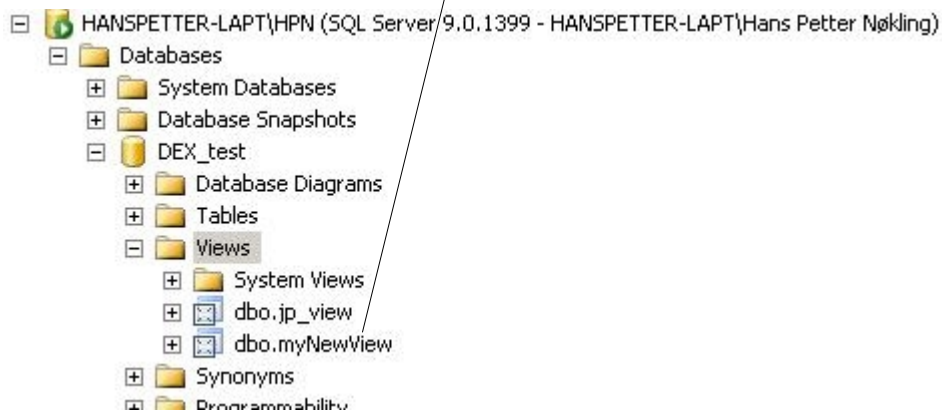


7. Enter a name for the view:



Enter desired name and click **OK**.

The view has now been created, and you can see it in the Object Explorer window:



You can now access this View from DEX! :-)